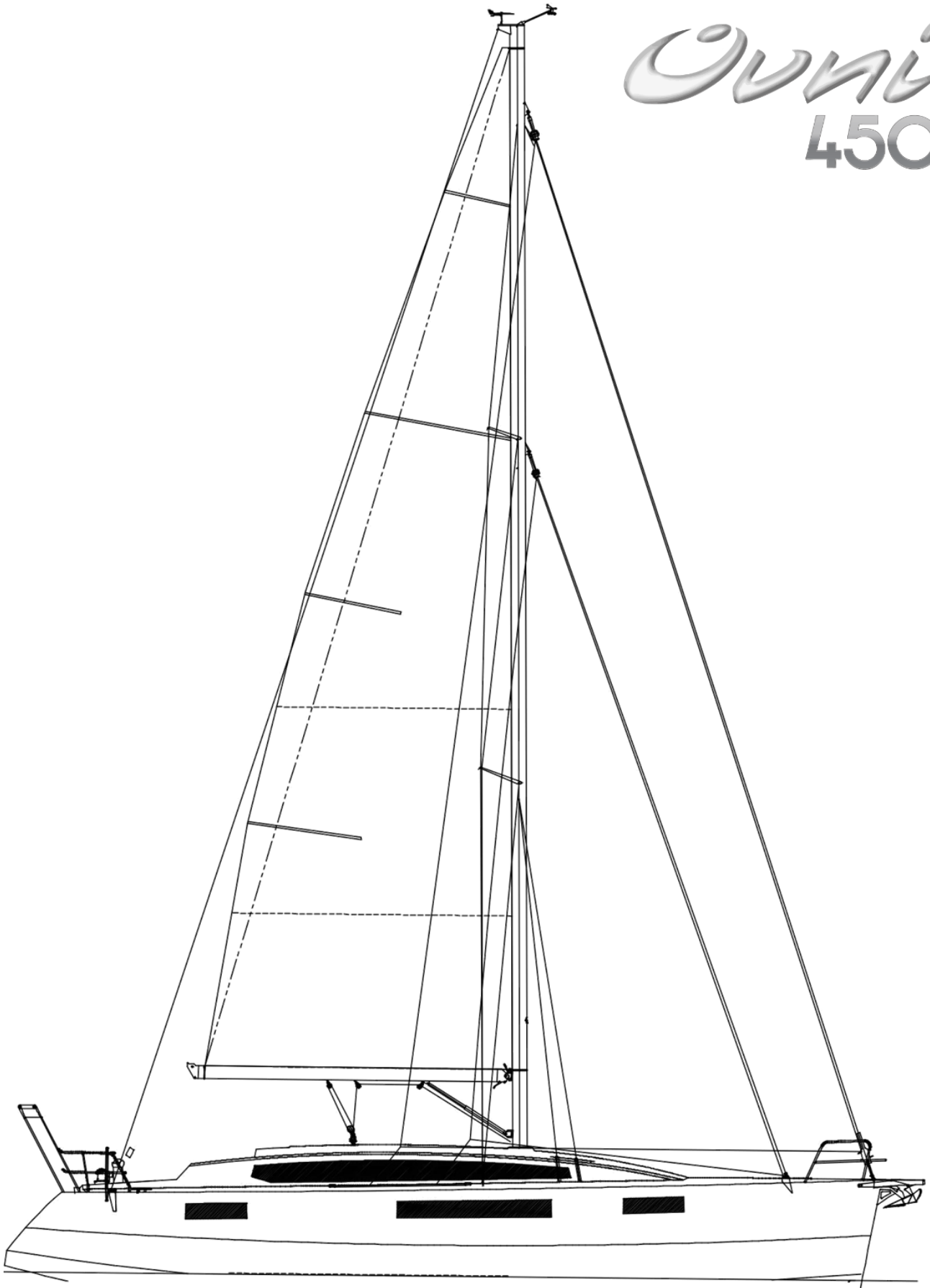


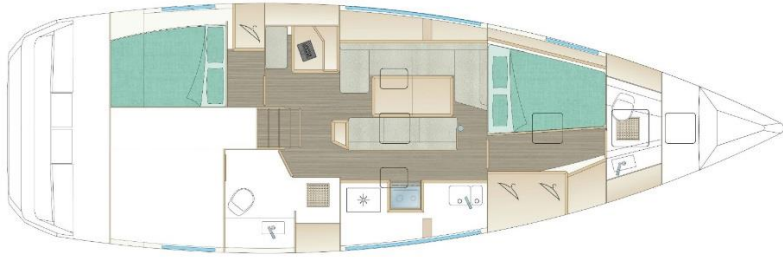
Ovni 450





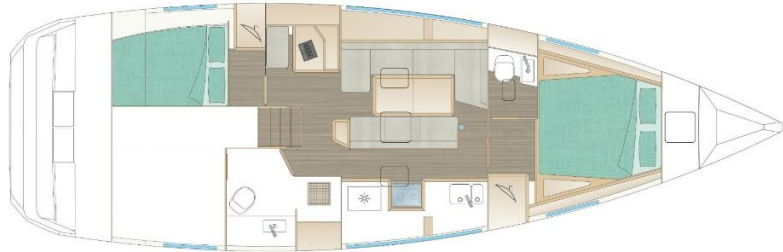
VERSION 111 (STANDARD)

1 aft cabin on portside, 1 convertible aft locker on starboard, 1 large head, 1 fore owner cabin & 1 fore locker



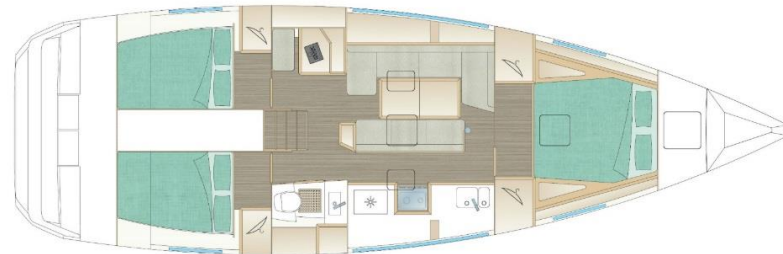
VERSION 112 (OPTION)

1 aft cabin on portside, 1 convertible aft locker on starboard, 1 large head, 1 fore cabin on portside, 1 fore head & 1 fore locker



VERSION 114 (OPTION)

1 aft cabin on portside, 1 convertible aft locker on starboard, 1 large heads, 1 fore owner cabin, 1 head on portside & 1 fore locker



VERSION 211 (OPTION)

2 aft cabins, 1 head on starboard, 1 fore owner cabin & 1 fore locker



VERSION 212 (OPTION)

2 aft cabins, 1 head on starboard, 1 fore cabin on portside, 1 fore heads & 1 fore locker



VERSION 214 (OPTION)

2 aft cabins, 1 head on starboard, 1 fore owner cabin, 1 head on portside & 1 fore locker

Standard DESCRIPTION and INVENTORY

Version 111: 2 Cabins + 1 large aft Head with separate shower

I. GENERAL SPECIFICATIONS

- Architect	Marc Lombard
- Design category	A – 8 persons
- Materials	Aluminium 5083 H111 and 6060 T6 profiles 10 Gloss varnished horizontal grain oak
- Hull length L_H	13.98 m
- Length on waterline L_{WL}	12.66 m
- Maximum beam	4.29 m
- Draught (min./max.)	1.05/2.90 m
- Air draught	19.50 m excluding aerials
- Displacement (light/maximum load)	11,550 kg/ 14,550 kg
- Ballast	3,725 kg including 500kg centreboard
- Freshwater capacity	540 l
- Fuel tanks	2 x 250 l
- Blackwater tank	1 x 50 l
- Sail area upwind	93.5 m ²
- Battened Mainsail area	42 m ²
- Genoa area (on furler)	51.5 m ²
- Staysail area (on furler on option)	23 m ²
- Staysail (with snap hooks on option)	24.5 m ²
- Gennaker area	97 m ²
- Asymmetrical Spinnaker area	128 m ²
- Engine	Volvo D2-50 shaft drive (36.5 kW)
- Maximum power allowed	75 hp (55 kW)

II. DECK FITTINGS

- Exotic wood external woodwork
- Aluminium bow nose with integrated bow roller
- Painted aluminium toerails
- Self-draining chain locker, cable clinch
- Vertical electric windlass 1000W chain grab $\varnothing 10$ and gypsy
- Stainless steel Swedish-style anchor pulpit with exotic wood seat, LED navigation lights
- S/s aft pulpits with horseshoe buoy bracket
- Exotic wood outboard engine bracket
- S/s double lifelines on s/s stanchions and side opening gates
- 2 bow mooring cleats 330 mm welded & bolted
- 2 stern mooring cleats 330 mm welded & bolted
- 2 midship spring cleats 330 mm welded & bolted
- Anodised aluminium chain-plates with s/s bushes
- 1 fore cabin hatch (575x575) with blind
- 1 saloon hatch (575x575) with blind
- 2 saloon/heads hatches (530x400) with curtain
- 4 hatches on coaming (415x275) for heads, aft cabin and chart table with curtains
- 8 fixed hull portholes (700x250) with curtains on rails
- 2 opening Plexiglas coachroof coaming with curtains
- 1 opening porthole in the cockpit (365x190) per aft cabin with curtain
- 1 self-supporting mainsheet track, adjustable traveller with tackle

- 1 genoa/staysail sheet tracks with 2 piston adjustable traveller cars
- 2 double pulleys with clamps, return sheet leads on winches
- 2 locking winch handles
- 2 54 AST genoa sheet/spinnaker winches
- 2 40 AST halyard winches on coachroof
- 2 sheave boxes (x6) leading halyards and reefs back to the cockpit
- 5+5 cam clutches on coachroof for halyards, reefs, downhaul
- 6 aluminium grab rails welded on coachroof
- 2 aluminium grab rails welded on transom
- 1 aluminium grab rail on bathing platform for bathing ladder
- Water, fuel, black water deck fillers
- Hot and cold water shower on bathing platform
- Two engine ventilation grills on bathing platform
- Bathing platform with s/s ladder and lockable liferaft storage
- Harness clip-in attachment points (companionway, helm station & bathing platform)
- Aluminium aft arch for accessories with 2 LED ambient lights, 1 LED stern light and mooring cleats for lifting dinghy
- Aluminium dinghy davit on aft arch
- Block + fairleads with cam clutch for genoa furler line feeders
- Forward sail locker with aluminium ladder and deck access depending of the option chosen
- 2 grab rails to access the sail locker

III. RIGGING

- Anodised aluminium deck stepped mast, double swept aft spreaders, 4 mast steps to reach main sail and 2 mast steps at the head of the mast
- LED mooring and masthead navigation lamps, halogen deck floodlight
- Girouette WINDEX en tête de mât
- Genoa furling system
- Anodised Aluminium boom fitted with outhaul and 3 reef lines leading back to cockpit
- 1 rigid boom vang with tackle
- Mast step/pod with 9 blocks
- S/s standing fractional rigging:
 - 1 forestay
 - 2 backstays (option: 1 backstay insulated)
 - 2 upper shrouds
 - 2 inter shrouds
 - 2 aft lower shrouds
- Running rigging
 - 1 mainsail halyard
 - 1 genoa halyard
 - 1 boom topping lift
 - 2 genoa sheets

IV. SAILS

- Sails from INCIDENCES SAILS
- Dacron cross-cut mainsail, 3 reefs including 2 automatic reefs, lazy bag and battens
- Furling Dacron cross-cut genoa, UV strip, bag

V. COCKPIT

- Large self-draining cockpit with direct access to bathing platform through aluminium tipping bench
- Slatted exotic wood bench seats, exotic wood cockpit floor
- Synthetic marble or teak covered cockpit table aluminium foot & bottle locker and central storage area
- 4 Coaming lockers with permanent ventilation of aft cabins
- Twin aluminium rudders, aluminium rudderstocks & self-aligning rudder bearings
- Ø900 twin steering wheels, compass & compass cover for each helm station

- Aluminium tiller
- Engine control panel on main starboard station helm, hydraulic centreboard lifting controller
- 2 locking cockpit lockers
- storage & gas lockers underneath helmsman starboard seat
- Storage locker for the life raft
- 3 or 4 storage lockers on transom
- Manual bilge pump
- 1 opening porthole in the cockpit per aft cabin
- Harness clip-in attachment points
- 2 genoa sheets lockers under main winches

VI. COMPANIONWAY

- Smoked Plexiglas sliding companionway hatch
- Smoked Plexiglas 2 part washboards with vents and stainless steel lock
- Exotic wood frame
- 1 leather-wrapped S/s grab rail + 1 grab rail in wood bulkhead
- Solid wood non-slip companionway steps with courtesy lights
- Engine access under companionway steps on gas struts
- Storage shelves under companionway
- Headroom: 2.02 m

VII. NAVIGATION STATION

- Chart table with chart storage (825 x 830)
- Navigator's seat with storage beneath
- Storage underneath chart table
- Electric control panel with 20 functions at 12V, 5 functions at 220V, 1 12V socket, 1 220V socket, 2 USB sockets, leak meter, water and fuel gauge
- Opening desk for built in electronic devices
- 1 directional chart reading light + 1 LED spotlight

VIII. SALOON

- Port side U-shaped bench seat and bench seat opposite on centreboard casing
- Large storage space under seating
- Large fixed table: optional double berth conversion
- Upholstered foam cushions, 12cm thick + backrests
- Shelf behind seating with storage space
- High furniture unit with door and shelf
- Vinyl lining on ceiling and wood + lining on hull sides
- Teak and holly laminate or Dark Wengé flooring
- Ventilation by 2 saloon hatches (525x395) with blinds
- 2 fixed hull portholes (2300x250) with curtains
- Plexiglas coachroof coaming window with curtains
- 4 LED spotlights
- Varnished aluminium mast support
- Headroom: 1.98 m

IX. GALLEY

- Linear galley
- Synthetic marble worktop with solid wood fiddles (various colours available)
- Built-in s/s double bowl sink
- Pressurised hot and cold-water
- Seawater foot pump (with fresh water switchover)
- Gimballed s/s two-burner stove with oven with s/s protection rail
- 12V inox refrigerator, two drawers, 150 L

- Storage cupboard under sink with shelves & plastic bin
- 5 drawers unit under worktop
- High crockery cupboard with door and shelf
- Shelf behind the stove with bottle storage
- Ventilation through opening deck hatch (415x275) with blind
- Plexiglas coachroof coaming window with curtains
- 3 LED spotlights, 2 sockets at 220V
- 2 fixed hull porthole with curtains
- Teak and holly laminate or dark wengé flooring
- Headroom: 1.96 m

X. FORWARD CABIN (Version 111)

- 1 central double berth 205x205 (bottom) to 130 cm (top)
- 12cm thick upholstered mattress
- Storage lockers under berth
- 2 drawers at the berth end
- 2 Ventilated hanging lockers
- Locking door separating cabin from saloon with retaining hook
- Vinyl lining on ceiling and wood + lining on hull sides
- 2 shelves on hull side
- Ventilation through opening deck hatch (575x575) with blind
- 2 fixed hull portholes (500x220) with curtains
- 2 spotlights, 1 adjustable reading LED light, 1 double USB socket
- Teak and holly laminate or dark wengé flooring
- Headroom: 2.05 m

XI. OWNER FORE CABIN (Version 114)

- 1 double berth 210x160 (bottom) to 130 cm (top)
- 12cm thick upholstered mattress
- Storage lockers under berth
- 1 ventilated hanging locker
- 2 shelves on hull side
- Locking door separating cabin from saloon with retaining hook
- Vinyl lining on ceiling and wood on hull sides
- Ventilation through opening deck hatch (575x575) with blind
- 2 fixed hull portholes (900x250) with curtains
- 2 spotlights, 2 LED adjustable reading lights, 1 double USB socket
- Teak and holly laminate or dark wengé flooring
- Headroom: 2.05 m

XII. FORWARD HEAD & SHOWER COMPARTMENT (Versions 114 & 214)

- Separating door to cabin
- White laminate bulkheads
- Synthetic marble worktop, cabinet behind the washbasin
- Mirror
- Manuel pump toilet, plastic holding tank (55L)
- Washbasin + hot and cold pressurised spray tap
- Ventilation through opening deck hatch (575x575) with blind
- 2 LED spotlights, 1 220V socket
- Headroom: 1.87m

XIII. AFT CABINS

- 1 removable double berth 200x128 cm (both cabins) for access to engine compartment
- 12cm thick upholstered mattress
- Storage under berth (+ aluminium storage compartment for batteries)
- Storage locker with ventilated hanging locker
- Shelf on hull side
- Locking door separating cabin from saloon with retaining hook
- Side engine inspection hatch in each cabin
- Teak and holly laminate or dark wengé flooring
- Vinyl lining on ceiling and wood on hull sides
- Ventilation by opening porthole on coachroof (415x275) and cockpit (350x170) with curtains
- 1 fixed hull porthole (900x250) with curtains
- 1 spotlight, 2 LED adjustable reading lights, 1 double USB socket
- Electric circuit breaker on port berth front
- Headroom: 1.92 m

XIV. AFT HEAD-SHOWER COMPARTMENT (Versions 111, 112 & 114)

- Locking door separating the cabin from the saloon
- Separated shower compartment (2 cabin version)
- Shower column with mixer (hot/cold pressurized water)
- Sailing gear wardrobe with door and water discharge
- White laminate bulkheads
- White & Grey layouts, synthetic marble worktop
- Cabinet behind the washbasin
- Mirror on bulkhead
- Engine inspection hatch and door to aft sail locker (2 cabin version)
- Painted aluminium shower basin
- Manuel pump toilet, plastic holding tank (55L)
- Washbasin + hot and cold pressurised spray tap
- 1 electric shower discharge pump
- Ventilation by opening porthole on coachroof
- 2 LED spotlights, 1 220V socket
- Headroom: 1.93 m

XV. AFT STORAGE LOCKER (Versions 111, 112 & 114)

- Storage locker located starboard of companionway
- Double access from cockpit and shower compartment
- Single berth 195x66cm with closets (Option)
- Aluminium tube for ropes storage
- Teak and holly laminate or dark Wengé flooring
- 2 LED spots with switch
- Customized layout on option
- 1 fixed hull porthole (900x250 mm)
- Headroom: 1.45 m

XVI. FORWARD STORAGE LOCKER (Versions 111, 112, 211 & 212)

- Access by opening deck hatch 700x700
- 2 Aluminium tubes for ropes & sails storage
- Double access from cockpit and shower compartment
- Aluminium ladder for access
- LED light
- Watertight bulkhead between locker and stem
- Insulation and layout (option)

XVII. MECHANICS – ELECTRICITY

- Volvo D2-50 shaft drive, 50 hp insulated two-pole diesel engine
- 12V lighting in the engine compartment
- Ø30 s/s shaft with Volvo rotary shaft seal and RH 17x16 fixed three blade propeller, sacrificial anode
- Soundproof ventilated engine compartment
- 230V AC 50Hz Circuit which includes dock outlet, leakage protection & electric panel
- 3 AGM service batteries \cong 130Ah + 1 engine battery \cong 70 Ah
- Battery charger (\cong 60A) and 120A load distributor
- 40 l water heater, 220V supply and via engine heat exchanger
- Automatic electric bilge pumps with switch on control panel
- Aluminium welded seacocks

XVIII. CENTREBOARD AND RUDDERS

- Cast-iron rotating centreboard with ballast
- 12V Hydraulic command for lifting and lowering centreboard with position indicator
- Safety release in case centreboard grounds
- Twin Helm station in cockpit with twin rudders with self-aligning bearings

Alubat Chantier Naval regularly improves its models thanks to feedback from customers and the developments made by its teams. The specifications in this document are not binding and ALUBAT reserves the right to update them without notice.



ALUBAT CHANTIER NAVAL

**ZI Les Plesses – 42 avenue Louis Bréguet
85180 Le Château d’Olonne – France**

Tel: +33 (0)6 51 21 08 02

Email: info@alubat.com

Limited company with a registered capital of 680,000 Euros

RCS La Roche sur Yon 7999089 750

www.alubat.com