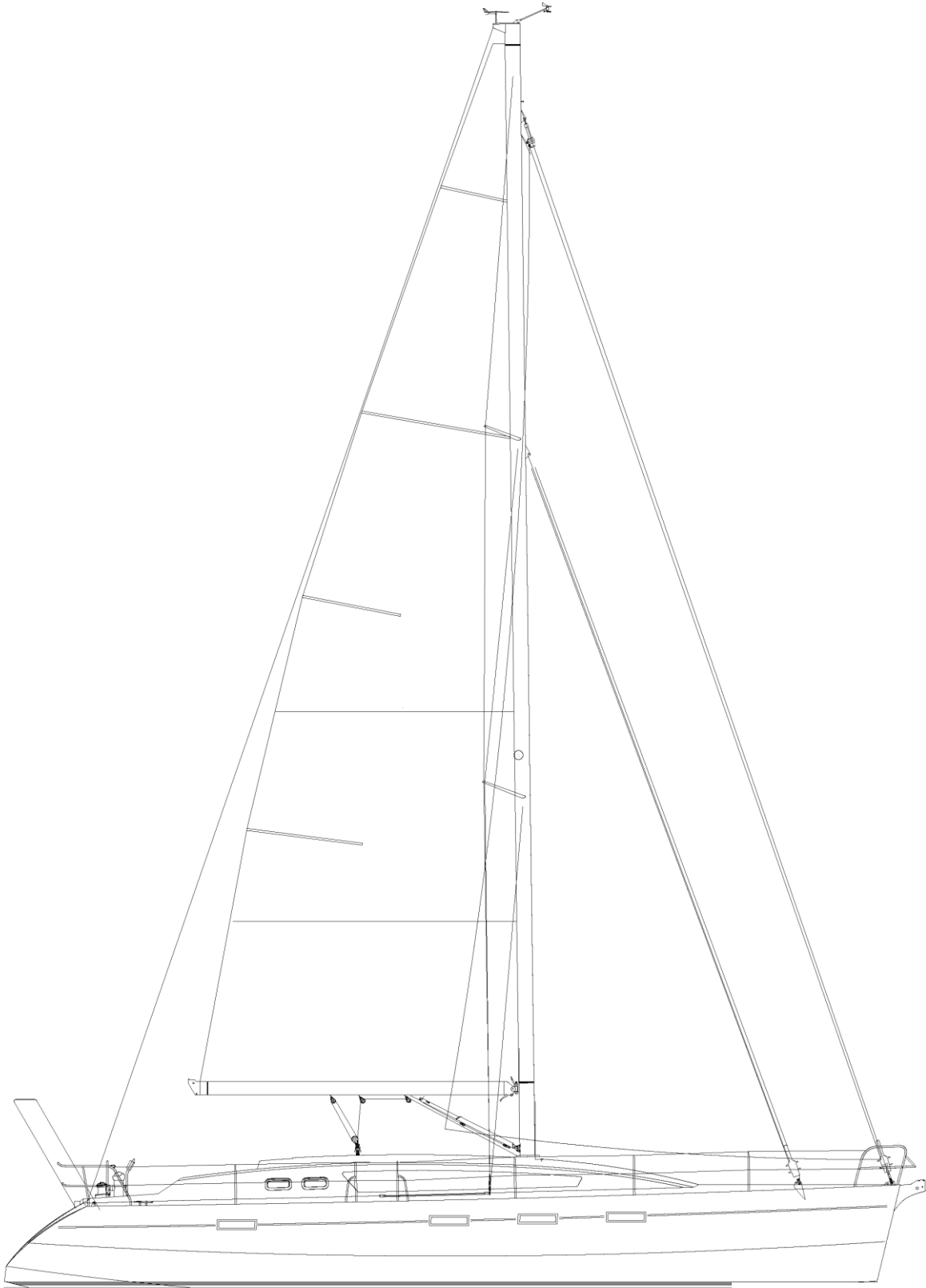


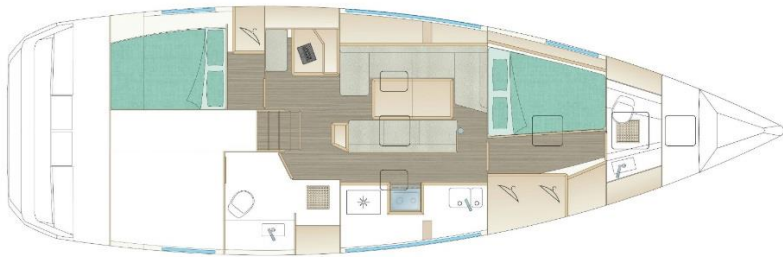
# Ovni 445





**VERSION 111 (STANDARD)**

1 aft cabin on portside, 1 convertible aft locker on starboard, 1 large head, 1 fore owner cabin & 1 fore locker



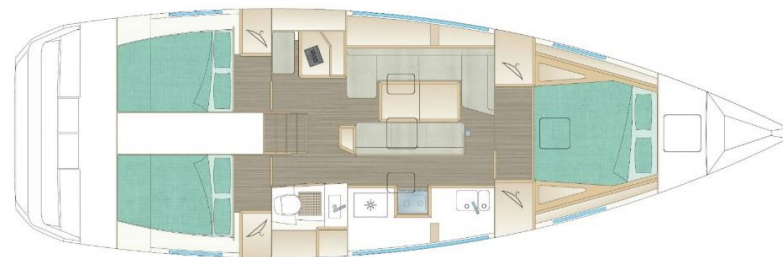
**VERSION 112 (OPTION)**

1 aft cabin on portside, 1 convertible aft locker on starboard, 1 large head, 1 fore cabin on portside, 1 fore head & 1 fore locker



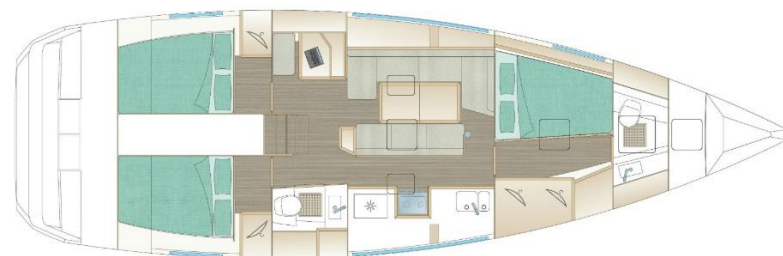
**VERSION 114 (OPTION)**

1 aft cabin on portside, 1 convertible aft locker on starboard, 1 large heads, 1 fore owner cabin, 1 head on portside & 1 fore locker



**VERSION 211 (OPTION)**

2 aft cabins, 1 head on starboard, 1 fore owner cabin & 1 fore locker



**VERSION 212 (OPTION)**

2 aft cabins, 1 head on starboard, 1 fore cabin on portside, 1 fore heads & 1 fore locker



**VERSION 214 (OPTION)**

2 aft cabins, 1 head on starboard, 1 fore owner cabin, 1 head on portside & 1 fore locker

# Standard DESCRIPTION and INVENTORY

## 2 Cabins + 1 Head (standard)

### I. GENERAL SPECIFICATIONS

- Architect	Marc Lombard
- Design category	A
- Materials	Aluminium 5083 H111 and 6060 T6 profiles 35 Gloss varnished vertical grain oak (option horizontal grain)
- Hull length $L_H$	13.80 m (45'3")
- Length on waterline $L_{WL}$	12.66 m (41'6")
- Maximum beam	4.29 m (14')
- Draught (min./max.)	1.05/2.90 m (3'5"/9'6")
- Air draught	19.50 m (63'11") excluding aerials
- Displacement (light/maximum load)	11,550 kg/ 14,550 kg (11 tons 823 lb /14 tons 717 lb)
- Ballast	3,725 kg / (3 tons 1492 lb)
- Freshwater capacity	540 l (118 gal 6 pt)
- Fuel tanks	2 x 250 l (54 gal 7 pt)
- Blackwater tank	1 x 55 l (12 gal)
- Sail area upwind	95.5 m <sup>2</sup> (114 yd <sup>2</sup> )
- Mainsail area	43.5 m <sup>2</sup> (52 yd <sup>2</sup> )
- Genoa area	52 m <sup>2</sup> (62 yd <sup>2</sup> )
- Staysail area	25 m <sup>2</sup> (30 yd <sup>2</sup> )
- Spinnaker area	135 m <sup>2</sup> (≅161 yd <sup>2</sup> )
- Engine	Volvo D2-50 shaft drive (36.5 kW)
- Maximum power allowed	75 hp (55 kW)

### II. DECK FITTINGS

- Non slip paint on horizontal surfaces
- Anodised bow-plate with double bow rollers
- Painted aluminium toerails
- Self-draining chain locker, cable clinch
- Vertical electric windlass 1000W chain grab Ø10 and gypsy
- Stainless steel Swedish-style anchor pulpit, LED navigation lights
- S/s aft pulpits with horseshoe buoy bracket and exotic wood outboard engine bracket
- Double lifelines on s/s stanchions and side opening gates
- 2 bow mooring cleats 330 mm
- 2 stern mooring cleats 330 mm
- 2 midship spring cleats 330 mm
- 1 260 mm cleat with stern roller on starboard side
- Anodised aluminium chain-plates with s/s bushes
- 1 fore cabin hatch (≅575x575) with blind
- 1 saloon hatch (≅575x575) with blind
- 2 saloon/heads hatches (≅450x320) with curtain
- 4 hatches on coaming (≅415x275) for heads, aft cabin and chart table with curtains
- 6 fixed hull portholes (≅500x220) with curtains on rails (7 in 3 cabin version)
- 2 Plexiglas coachroof coaming with curtains
- 1 opening porthole in the cockpit (≅350x170) per aft cabin with curtain
- 1 self-supporting mainsheet track, adjustable traveller with tackle
- 2 genoa sheet tracks with 2 piston adjustable traveller cars
- Return sheet leads on winches
- 2 locking winch handles

- 2 54 AST genoa sheet/spinnaker winches
- 2 40 AST halyard winches on coachroof
- 2 sheave boxes (x6) leading halyards and reefs back to the cockpit
- 6+5 cam clutches on coachroof for halyards, reefs, downhaul
- 6 grab rails welded on coachroof
- Water, fuel, black water deck fillers
- Hot and cold water shower on bathing platform
- Two engine ventilation grills on bathing platform
- Swim platform with s/s ladder and liferaft storage
- Harness clip-in attachment points (companionway and helm station)
- Aft arch for accessories with LED stern light and attachment points for lifting dinghy
- Block + fairleads with cam clutch for genoa furler line feeders

### III. RIGGING

- Anodised aluminium deck stepped mast, double swept aft spreaders, 4 mast steps to reach boom
- LED mooring and masthead navigation lamps, halogen deck floodlight
- Genoa furling system
- 1 rigid boom vang with tackle
- S/s standing fractional rigging:
  - 1 forestay
  - 2 backstays (option: 1 backstay insulated)
  - 2 upper shrouds
  - 2 inter shrouds
  - 2 aft lower shrouds
  - 2 running backstays
- Running rigging
  - 1 mainsail halyard
  - 1 genoa halyard
  - 1 boom topping lift
- Anodised Aluminium boom fitted with outhaul and 3 reef lines leading back to cockpit
- 2 genoa sheets
- Mast step/pod with 9 blocks

### IV. SAILS

- Dacron cross-cut mainsail, 3 reefs including 2 automatic reefs, lazy bag and battens
- Furling Dacron cross-cut genoa, bag

### V. COCKPIT

- Large self-draining cockpit
- Slatted exotic wood bench seats, decking on the cockpit floor
- Coaming lockers
- Aluminium head for tiller, aluminium rudderstocks
- Ø1100 steering wheel, compass, compass cover, stainless steel arch, engine controls and display
- Gas bottle locker on bathing platform with drain
- 2 locking cockpit lockers
- Manual bilge pump
- 1 opening porthole in the cockpit per aft cabin
- 2 trapdoors for emergency tiller
- Harness clip-in attachment points

## VI. COMPANIONWAY

- Smoked Plexiglas sliding companionway hatch
- Smoked Plexiglas 2 part washboards with vents and stainless steel lock
- Exotic wood frame
- Solid wood non-slip companionway steps
- Engine access under companionway steps on gas struts
- Headroom: 2.02 m

## VII. NAVIGATION STATION

- Chart table with chart storage
- Slatted navigator's seat with storage beneath
- Bookshelf and storage
- Electric control panel with 15 functions at 12V, 5 functions at 220V, 1 12V socket, 1 220V socket, 1 USB socket, leak meter, water and fuel gauge
- 1 directional chart reading light + 1 LED spotlight

## VIII. SALOON

- Port side U-shaped bench seat and bench seat opposite on centreboard casing
- Large storage space under seating
- Large fixed table: optional double berth conversion
- Upholstered foam cushions, 12cm thick + backrests
- Shelf behind seating with storage space
- Vinyl lining on ceiling and wood + lining on hull sides
- Teak and holly laminate flooring
- Ventilation by 2 saloon hatches ( $\cong 525 \times 395$ ) with blinds
- 2 fixed hull portholes ( $\cong 500 \times 220$ ) with curtains
- Plexiglas coachroof coaming window with curtains
- 4 LED spotlights
- Aluminium mast support
- Headroom: 2.02 m

## IX. GALLEY

- Linear galley
- Formica worktop with solid wood fiddles
- Built-in s/s double bowl sink
- Pressurised hot and cold-water
- Seawater foot pump (with fresh water switchover)
- Gimballed s/s two-burner stove with oven with s/s protection rail
- 12V refrigerator, top access, 180 l
- Storage cupboard under sink
- 2 crockery storage locker with 2 shelves
- Shelf behind the stove with bottle storage
- Ventilation through opening deck hatch ( $\cong 415 \times 275$ ) with blind
- Plexiglas coachroof coaming window with curtains
- 3 LED spotlights, 2 sockets at 220V
- 1 fixed hull porthole ( $\cong 500 \times 220$ ) with curtains
- Headroom: 1.96 m

## **X. FORWARD CABIN (VERSION 111)**

- 1 central double berth 205x205 (bottom) to 130 cm (top)
- 12cm thick upholstered mattress
- Storage lockers under berth
- 2 drawers at the berth end
- 2 Ventilated hanging lockers
- Locking door separating cabin from saloon with retaining hook
- Vinyl lining on ceiling and wood + lining on hull sides
- 2 shelves on hull side
- Ventilation through opening deck hatch (575x575) with blind
- 2 fixed hull portholes (500x220) with curtains
- 2 spotlights, 1 adjustable reading LED light, 1 double USB socket
- Teak and holly laminate or dark wengé flooring
- Headroom: 2.05 m

## **XI. OWNER FORE CABIN (VERSION 114)**

- 1 double berth 210x160 (bottom) to 130 cm (top)
- 12cm thick upholstered mattress
- Storage lockers under berth
- 1 ventilated hanging locker
- 2 shelves on hull side
- Locking door separating cabin from saloon with retaining hook
- Vinyl lining on ceiling and wood on hull sides
- Ventilation through opening deck hatch (575x575) with blind
- 2 fixed hull portholes (900x250) with curtains
- 2 spotlights, 2 LED adjustable reading lights, 1 double USB socket
- Teak and holly laminate or dark wengé flooring
- Headroom: 2.05 m

## **XII. FORWARD HEAD & SHOWER COMPARTMENT (VERSIONS 114 & 214)**

- Separating door to cabin
- White laminate bulkheads
- Formica worktop, cabinet behind the washbasin
- Mirror
- Manuel pump toilet, plastic holding tank (55L)
- Washbasin + hot and cold pressurised spray tap
- Ventilation through opening deck hatch (575x575) with blind
- 2 LED spotlights, 1 220V socket
- Headroom: 1.87m

## **XIII. AFT CABINS**

- 1 removable double berth 200x128 cm (both cabins) for access to engine compartment
- 12cm thick upholstered mattress
- Storage under berth (+ aluminium storage compartment for batteries)
- Storage locker with ventilated hanging locker
- Shelf on hull side
- Locking door separating cabin from saloon with retaining hook
- Side engine inspection hatch in each cabin
- Teak and holly laminate or dark wengé flooring
- Vinyl lining on ceiling and wood on hull sides
- Ventilation by opening porthole on coachroof (415x275) and cockpit (350x170) with curtains

- 1 fixed hull porthole (900x250) with curtains
- 1 spotlight, 2 LED adjustable reading lights, 1 double USB socket, 1 220V socket
- Electric circuit breaker on port berth front
- Headroom: 1.92 m

#### **XIV. AFT HEAD-SHOWER COMPARTMENT (VERSIONS 111, 112 & 114)**

- Locking door separating the cabin from the saloon
- Separated shower compartment (2 cabin version)
- Shower column with mixer (hot/cold pressurized water)
- Sailing gear wardrobe with door and water discharge
- White laminate bulkheads
- White & Grey layouts, formica worktop
- Cabinet behind the washbasin
- Mirror on bulkhead
- Engine inspection hatch and door to aft sail locker (2 cabin version)
- Painted aluminium shower basin
- Manuel pump toilet, plastic holding tank (55L)
- Washbasin + hot and cold pressurised spray tap
- 1 electric shower discharge pump
- Ventilation by opening porthole on coachroof
- 2 LED spotlights, 1 220V socket
- Headroom: 1.93 m

#### **XV. AFT STORAGE LOCKER (VERSIONS 111, 112 & 114)**

- Storage locker located starboard of companionway
- Double access from cockpit and shower compartment
- Single berth 195x66cm with closets (Option)
- Aluminium tube for ropes storage
- Teak and holly laminate or dark Wengé flooring
- 2 LED spots with switch
- Customized layout on option
- 1 fixed hull porthole (900x250 mm)
- Headroom: 1.45 m

#### **XVI. FORWARD STORAGE LOCKER (VERSIONS 111, 112, 211 & 212)**

- Access by opening deck hatch 700x700
- 2 Aluminium tubes for ropes & sails storage
- Double access from cockpit and shower compartment
- LED light
- Watertight bulkhead between locker and stem
- Insulation and layout (option)

#### **XVII. MECHANICS – ELECTRICITY**

- Volvo D2-50 shaft drive, 50 hp insulated two-pole diesel engine
- Ø30 s/s shaft with Volvo rotary shaft seal and RH 17x16 fixed three blade propeller, sacrificial anode
- Soundproof ventilated engine compartment
- 230V AC 50Hz Circuit which includes dock outlet, leakage protection & electric panel
- 3 AGM service batteries  $\cong$ 130Ah + 1 engine battery  $\cong$ 70 Ah
- Battery charger ( $\cong$ 60A) and 120A load distributor

- 40 l water heater, 220V supply and via engine heat exchanger
- Automatic electric bilge pumps with switch on control panel

## **XVIII. CENTREBOARD AND RUDDERS**

- Cast-iron rotating centreboard with ballast
- 12V Hydraulic command for lifting and lowering centreboard with position indicator
- Safety release in case centreboard grounds
- One Helm station in cockpit with twin rudders

Alubat Chantier Naval regularly improves its models thanks to feedback from customers and the developments made by its teams. The specifications in this document are not binding and ALUBAT reserves the right to update them without notice.



**ALUBAT CHANTIER NAVAL**  
**ZI Les Plesses – 42 avenue Louis Bréguet**  
**85180 Le Château d’Olonne – France**

Tel: +33 (0)6 51 21 08 02

Email: [info@alubat.com](mailto:info@alubat.com)

Limited company with a registered capital of 680,000 Euros

RCS La Roche sur Yon 7999089 750

**[www.alubat.com](http://www.alubat.com)**