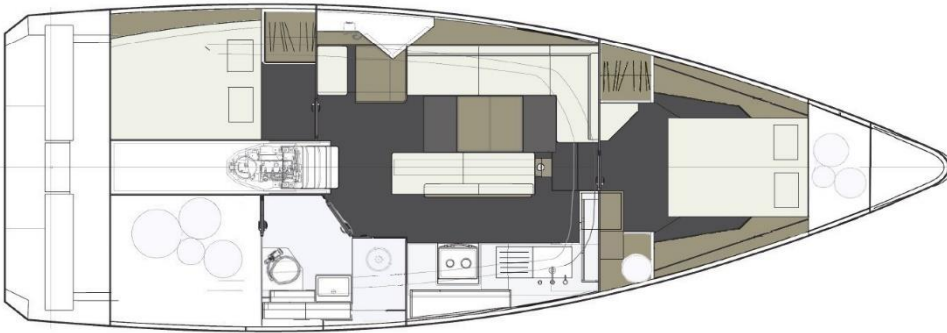
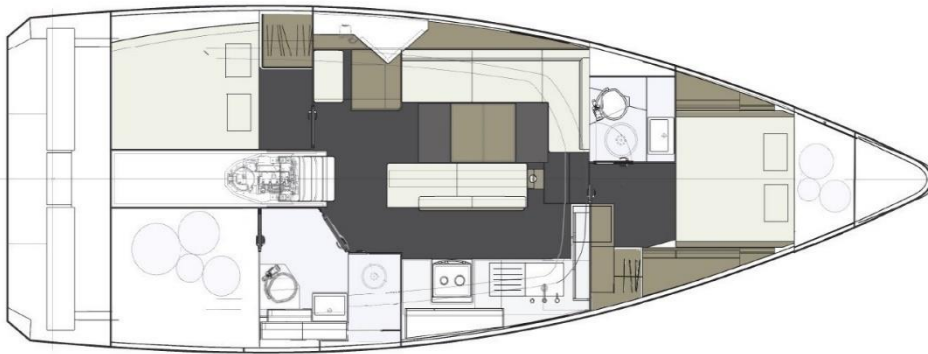


Ovni 400

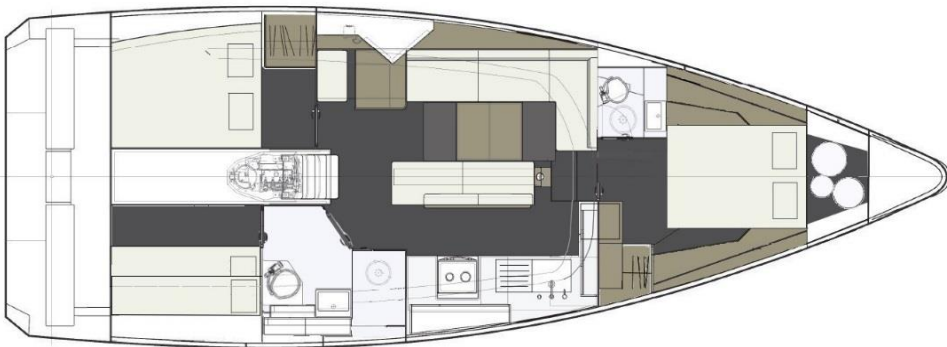




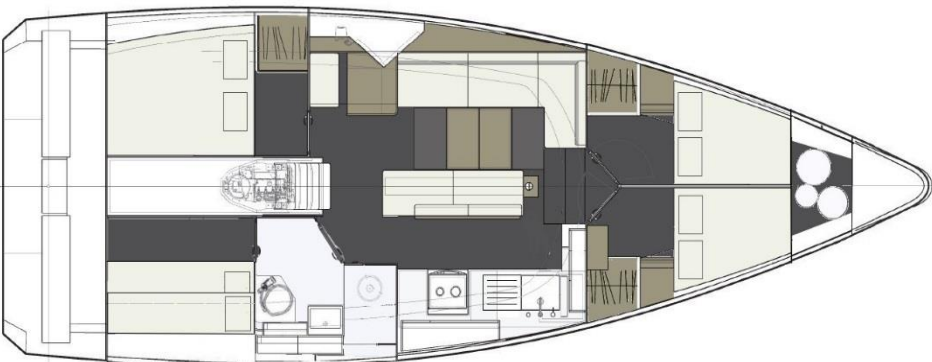
VERSION STANDARD
 2 Cabins, 1 aft Head with one separate shower, one insulated technical room with floor and one insulated fore sail locker



OWNER VERSION
 2 Cabins, 2 Heads whose one with one separate shower, one insulated technical room with floor and one insulated fore sail locker



FAMILY VERSION
 3 Cabins including the one in the technical room with bunk bed, 2 Heads and one insulated fore sail locker with floor



CHARTER VERSION
 4 Cabins, 1 Head and one insulated fore sail locker with floor

Standard DESCRIPTION and INVENTORY OVNI 400

Version: 2 Cabins + 1 large aft Head with separate shower, one insulated fore sail locker and one insulated technical room with floor

I. GENERAL SPECIFICATIONS

- Architect	Cabinet MORTAIN & MAVRIKIOS
- Design category	Category A
- Materials	Aluminium 5083 H111 and 6060 T6 profiles
- Hull length L_H	12.90 m
- Length on waterline L_{WL}	11.54 m
- Maximum beam	4.35 m
- Draught (min./max.)	0.98 /2.88 m
- Air draught	18.50 m excluding aerials
- Displacement (light/maximum load)	11200 kg/ 13400 kg
- Ballast	3900 kg including 1300kg centreboard
- Freshwater capacity	2x200 L= 400 L
- Fuel tanks	2x250 L= 540 L
- Blackwater tank	1 x 50 L
- Sail area upwind	85 m ² /93 m ²
- Battened Mainsail area (classic/square top)	44 m ² /52 m ²
- Solent area (on furler)	41 m ²
- Engine	Volvo D2-50 shaft drive (36.5 kW)
- Maximum power allowed	75 cv

II. CONSTRUCTION

- Integral aluminum chine construction with a watertight bulkhead at the front and a crash box
- Welded structural reinforcements
- Welded and bolted mooring cleats
- Aluminum toe rails
- Welded seacocks
- Marine grade plywood and solid wood trim

III. DECK FITTINGS

- Exotic wood external woodwork
- Aluminium bow nose with integrated bow roller
- Self-draining chain locker, cable clinch
- Vertical electric windlass 1000W chain grab $\varnothing 10$ and gypsy
- Stainless steel Swedish-style anchor, LED navigation lights
- S/s double lifelines on s/s stanchions and side opening gates
- 2 bow mooring cleats 330 mm welded & bolted
- 2 stern mooring cleats 330 mm welded & bolted
- 2 midship spring cleats 330 mm welded & bolted
- Anodised aluminium chain-plates with s/s bushes
- 1 fore cabin hatch (575x575)
- 6 fixed hull portholes
- Panoramic Plexiglas coach roof with 5 opening portholes (176x323)
- 1 opening porthole in the cockpit for aft cabin on portside
- 2 blocks for the sheet of mainsail
- 2 solent sheet tracks with 1 piston adjustable traveller cars
- 2 double pulleys with clamps, return sheet leads on winches

- 2 locking winch handles
- 2 48 AST Solent sheet/Spinnaker winches
- 2 40 AST halyard winches on coach roof
- 2 sheave boxes (x6) leading halyards and reefs back to the cockpit
- Cam clutches on coach roof for halyards, reefs, downhaul
- Aluminium main sail arch with two handrails
- Aluminium grab rails welded on coach roof
- 2 aluminium grab rails welded on transom
- 1 aluminium grab rail on bathing platform for bathing ladder
- Water, fuel, black water deck fillers
- Hot and cold water shower on bathing platform
- Two engine ventilation grills on bathing platform
- Bathing platform with s/s ladder and lockable liferaft storage
- 4 Harness clips-in attachment points (companionway, helm station & bathing platform)
- Aluminium aft arch for accessories, 1 LED stern light and mooring cleats for lifting dinghy
- Block + fairleads with cam clutch for solent furler line feeders

IV. RIGGING

- Anodised aluminium deck stepped mast, double swept aft spreaders, 4 mast steps to reach main sail and 2 mast steps at the head of the mast
- Mooring and masthead navigation lamps, halogen deck floodlight
- Tri colour + white led mast head light
- Girouette WINDEX en tête de mât
- Solent furling system
- Anodised Aluminium boom fitted with outhaul and 3 reef lines leading back to cockpit
- 1 rigid boom vang with tackle
- Mast step/pod with blocks
- S/s standing fractional rigging:
 - 1 forestay
 - 2 backstays (option: 1 backstay insulated)
 - 2 upper shrouds
 - 2 inter shrouds
 - 2 aft lower shrouds
- Running rigging
 - 1 mainsail halyard
 - 1 Solent halyard
 - 1 boom topping lift
 - 2 Solent sheets + 1 main sail sheet

V. SAILS

- Sails from INCIDENCES SAILS
- Dacron cross-cut mainsail 44 m², 3 reefs including 2 automatic reefs, lazy bag and battens (square main sail on option 52m²)
- Furling Dacron cross-cut solent (41 m²), UV strip, bag

VI. COCKPIT

- Large self-draining cockpit with direct access to bathing platform through aluminium tipping bench
- Synthetic teak on bench seats and seats helmsman
- Coaming lockers with permanent ventilation of aft cabins
- Ø910 twin steering wheels, compass & compass cover for each helm station
- Engine control panel on main starboard station helm, hydraulic centreboard lifting controller
- Storage & gas lockers on the rear skirt
- Storage lockers on transom

- Manual bilge pump
- 1 opening porthole in the cockpit per aft cabin
- Harness clip-in attachment points
- 2 Solent sheets lockers under main winches

VII. COMPANIONWAY

- Smoked Plexiglas sliding companionway hatch
- Smoked vertical sliding Plexiglas door
- Exotic wood frame
- 1 leather-wrapped S/s grab rail + 1 grab rail in wood bulkhead
- Solid wood non-slip companionway steps
- Engine access under the 2 cylinders companionway steps
- Headroom: 1.98 m

VIII. NAVIGATION STATION

- Chart table with chart storage
- Navigator's seat with storage beneath
- Storage underneath chart table
- Electric control panel at 12V and 220V, 1 12V socket, 1 220V socket, 2 USB sockets, leak meter, water and fuel gauge
- Opening desk for built in electronic devices
- 1 directional chart reading light LED red and white

IX. SALOON

- Port side L-shaped bench seat and bench seat opposite on centreboard casing
- Large storage space under seating
- Large fixed table: optional double berth conversion
- Upholstered foam cushions, 12cm thick + backrests
- Lateral shelf behind seating with storage space
- 2 shelves
- Handrails
- Vinyl lining on ceiling and wood + lining on hull sides
- Locked wood flooring
- Ventilation by 2 opening portholes in the panoramic roof
- 1 fixed hull portholes with closure flap
- 4 LED spotlights
- Varnished aluminium mast support
- Headroom: 1.98 m

X. GALLEY

- Linear galley
- White staron (synthetic resin) worktop with solid wood fiddles
- Built-in s/s double bowl inox sink
- Pressurised hot and cold-water
- Gimballed s/s two-burner stove with oven with s/s protection rail
- 12V inox refrigerator, 2 drawers, 144 L, opening in the running direction
- Storage cupboard under sink with shelves & plastic bin
- Drawers unit under worktop
- High crockery cupboard with door and shelf
- Shelf behind the stove
- Handrails
- Ventilation by 1 opening portholes in the panoramic roof
- LED spotlights, 2 sockets at 220V
- 1 fixed hull porthole with closure flap
- Locked wood flooring

- Headroom: 1.95 m

XI. FORWARD CABIN

- 1 central double berth 200x140 (access in each sides)
- 12cm thick upholstered mattress
- Storages lockers under berth
- 1 wardrobe
- 1 cupboard on starboard
- Ventilation through opening deck hatch
- Locking door separating cabin from saloon with retaining hook
- Vinyl lining on ceiling and wood + lining on hull sides
- 2 shelves on hull side
- 2 fixed hull portholes with closure flap
- Locked wood flooring
- 3 spotlights, 2 adjustable reading LED lights with integrated USB socket
- Headroom: 1.88 m

XII. OWNER FORE CABIN

- 1 double berth 200x140
- 12cm thick upholstered mattress
- Storage lockers under berth
- 2 shelves on hull side
- 1 cupboard on starboard
- Locking door separating cabin from saloon with retaining hook
- Vinyl lining on ceiling and wood on hull sides
- Ventilation through opening deck hatch
- 2 fixed hull portholes with closure flap
- Locked wood flooring
- 3 spotlights, 2 LED adjustable reading lights with integrated USB socket
- Headroom: 1.88 m

XIII. FORWARD HEAD COMPARTMENT (option)

- Separating door to cabin
- White laminate bulkheads
- Worktop, cabinet behind the washbasin
- Manuel p on white staron, pump toilet, plastic holding tank
- Washbasin + hot and cold pressurised spray tap
- Ventilation through opening deck hatch
- LED spotlights, 1 220V socket
- Headroom: 1.88m

XIV. AFT CABINS

- 1 removable double berth 195x117 cm at the head x136 cm at the foot
- 12cm thick upholstered mattress
- 1 wardrobe
- Storage under berth
- Shelf on hull side
- Locking door separating cabin from saloon with retaining hook
- Side engine inspection hatch in each cabin
- Vinyl lining on ceiling and wood on hull sides
- Ventilation by 2 opening portholes on the panoramic roof and the cockpit
- 1 fixed hull porthole with closure flap
- 1 spotlight, 2 LED adjustable reading lights with integrated USB socket
- Headroom: 2.16 m

XV. AFT HEAD-SHOWER COMPARTMENT

- Locking door separating the cabin from the saloon
- Shower column with mixer (hot/cold pressurized water)
- Opening Sailing gear wardrobe and water discharge
- White laminate bulkheads
- Worktop on white staron
- Cupboard below and under the washbasin
- 2 shelves
- Separate shower
- Mirror on bulkhead
- Engine inspection hatch and door to aft sail locker
- Separate shower basin
- Composite flooring in all the head compartment
- Manuel pump toilet, plastic holding tank (55L)
- Washbasin + hot and cold pressurised spray tap
- 1 electric shower discharge pump
- Ventilation by opening porthole on the panoramic roof
- 2 LED spotlights, 1 220V socket
- Headroom: 1.96 m

XVI. AFT STORAGE LOCKER

- Storage locker located starboard of companionway
- Insulation black foam + armacell
- Double access from cockpit and shower compartment
- Wood flooring
- 2 LED spots with switch
- Customized layout on option
- 1 fixed hull porthole
- Headroom: 1.50 m

XVII. FORWARD STORAGE LOCKER

- Access by opening deck hatch
- Insulation black foam + armacell
- Watertight bulkhead between locker and stem

XVIII. MECHANICS – ELECTRICITY

- Volvo D2-50 shaftl drive, 50 hp insulated two-pole diesel engine
- 12V lighting in the engine compartment
- Shaft drive with Volvo (shaft drive in option)
- Soundproof ventilated engine compartment
- 230V AC 50Hz Circuit which includes dock outlet, leakage protection & electric panel
- 3 AGM services batteries 90Ah + 1 engine battery VETUS 90Ah
- Battery charger (\cong 60A) and 120A load distributor
- 30 l water heater, 220V supply and via engine heat exchanger
- 4 Automatics electrics bilges pumps with switch on control panel
- Aluminium welded seacocks

XIX. CENTREBOARD AND RUDDERS

- Cast-iron rotating centreboard with ballast
- 12V Hydraulic command for lifting and lowering centreboard with position indicator

- Safety release in case centreboard grounds
- Twin Helm station in cockpit with twin rudders with self-aligning bearings

This description is a basis of the preliminary project, it is given only as an indication and will be subject to modifications



ALUBAT CHANTIER NAVAL
ZI Les Plesses – 42 avenue Louis Bréguet
85180 Le Château d’Olonne – France

Tel: +33 (0)2 51 21 08 02

Email: info@alubat.com

Limited company with a registered capital of 680,000 Euros

RCS La Roche sur Yon 7999089 750

www.alubat.com